

A & A DI MEDIO & SON (AUST) PTY LTD
10-12 LAKEWOOD BLVD
BRAESIDE 3195
PHONE: 03 9580 3768 FAX: 03 9580 3739
A.B.N. 75 109 451 336 EMAIL: info@aadspl.com.au

CATALOGUE OF PARTS

MISCELLANEOUS



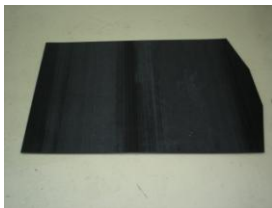
CODE: AAM-SS3M600
METAL STRIP - 3MM
MUD FLAPS



CODE: MS-LP08
CLIP PIN 5/16"



CODE: FCL-1002070
END SLIDE - 5MM



CODE: FCL-AADIMFLIPP
FLIP SLIDE - 5MM



CODE: MS-SP050030M
ROLL PIN LADDER - 5MM



CODE: AAM-SS5M600
METAL STRIP 5MM
FRONT MUD FLAP



CODE: AAM-SS5M1200
METAL STRIP - 5MM
MUD FLAPS

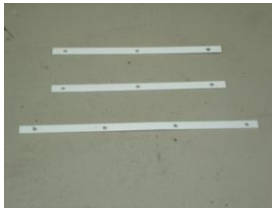


CODE: MS-SP100090MZ
ROLL PIN - 10MM



CODE: MG-1324MI
AADS - MUD FLAPS

MISCELLANEOUS



CODE: AAM-MSAF
METAL STRIPS – A FRAME



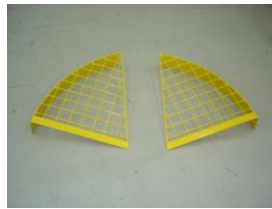
CODE: RP-DIM010
CHUTE RUBBER – AADS



CODE: AAM -LCACM
LOAD CHUTE - AADS
CROSS MEMBER



CODE: AAM-LCA001
LOAD CHUTE – AADS



CODE: AAM-SG
SAFETY GUARDS – AADS



CODE: AAM-SCA005
SWIVEL CHUTE - AADS



CODE: AAM-BRACT
ACTUATOR BRACKET



CODE: MS-120189-11001210
ACTUATOR – S/S ROD



CODE: AAM-ALBOX
ALUM BOX – REAR



CODE: MS-540MZPGSQUB
"U" BOLT 540



CODE: MS-425MZPGSQUB
"U" BOLT 425



CODE: AAM-FCL002
FLIP CHUTE ALUM WITH
PLASTIC LINER

MISCELLANEOUS



CODE: AAM-STARLAD
LADDER



CODE: MS-6390-35
ACTUATOR BAG



CODE: RP-DIM001
SWIVEL CHUTE
RUBBER FLAP



CODE: AAM-BSTRAP
BOUNCE STRAP



CODE: AAM-BRCC
BRACKET – CONTROL CABLE



CODE: MG-CEMEXMF
CEMEX - WARNING
MUD FLAP



CODE: AAM-CR
CHUTE RACK



CODE: MS-84-F3CLC07
TAILSHAFT ADAPTOR



CODE: HP-ASATT07GD01
COOLER & FAN 12 V



CODE: MS-500/007A
DO NOT OVERTAKE SIGN



CODE: HP-ASA0075ADO2
COOLER & FAN 24V



CODE: AAM-BRECV
BRACKET – ELEC CHUTE
VALVE

MISCELLANEOUS



CODE: MS-REF
GUARD POLE – END CAP



CODE: AAM-ECL001
END CHUTE WITH LINER



CODE: RP-DIM036
RUBBER CHUTE – FORBES



CODE: AAM-BRFREM
BRACKET FULL REMOTE



CODE: AAM-BRLAD
GAL "U" BRACKET FOR LADDER



CODE: AAM-BT - GBW
GEARBOX WASHER



CODE: MS-2T50300090
MS-2T250700200
GEARBOX 575/577



CODE: MS-CMBOS
GUARD POLE



CODE: GOLF BALL
HANDLE FOR CONTROL
LEVER



CODE: MS-CV2807
LADDER HANDLES



CODE: MS-HB300
BRACKETS – HANGER
FOR GUARDS



CODE: MG-SSA100
HORSE HAIR

MISCELLANEOUS



**CODE: MS-90M055
MS-90M075**
HYDRAULIC - MOTOR



CODE: MS-90R075MA
HYDRAULIC - PUMP



CODE: WP-HM18.00JBKIT
BRACKETS "J"



CODE: AAM-BRKWPM
BRACKET KENWORTH PUMP



CODE: AAM-BRKWPA
BRACKET KENWORTH PUMP AUTO



CODE: AAM-BRSG
BRACKET "L" SAFETY GUARDS



CODE: MS-CV1512
LADDER LATCHES



CODE: RP-DIM0026
LONG HANDLE FOR
SAFETY STEP



CODE: AAM-BRMPM
BRACKET – PUMP MACK
(AUTO)



CODE: AAM-BRGBM
BRACKET – GEARBOX MANUAL



CODE: RPM-DIM035
CHUTE RUBBER – RHEEM
(NEW TYPE)



CODE: MS-CLAMP BLOCKS
NYLON BLOCK TENSIONER

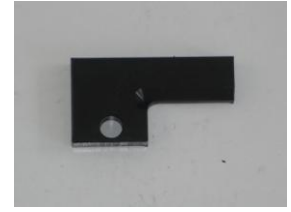
MISCELLANEOUS



CODE: RPM-DIM037
CHUTE RUBBER – RHEEM
(OLD TYPE)



CODE: RP-1004260R
PLASTIC BLOCK FOR LADDER
(RIGHT)



CODE: RP-1004260L
PLASTIC BLOCK FOR LADDER
(LEFT)



CODE: MS-SQ1R5907
PLASTIC CAP 50X50
FOR SAFETY STEP



CODE: RP-28891 HOOK
HOOK – PLASTIC FOR
CHUTE STRAPS



CODE: RP-P3SCR00
PLASTIC STRIP FOR
REAR OF AGI



CODE: AAM-SSL
SAFETY STEP – REAR
LEFT



CODE: AAM-SSR
SAFETY STEP – REAR
RIGHT



CODE: JPH-4360-01012
HYDRAULIC JACK - REAR



CODE: MS-500/04A
REFLECTORS – REAR



CODE: AAM-BRSP
BRACKET – REV UP & DOWN
SAFETY PLATFORM

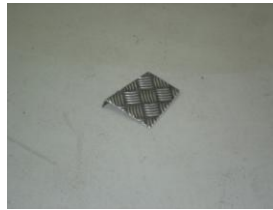


CODE: AAM- BRMSP
BRACKET – REV UP & DOWN
(MAWSONS)

MISCELLANEOUS



CODE: AAM-BRRCON
BRACKET – REV UP & DOWN
(REAR CONTROL)



CODE: AAM-BRRLAD
BRACKET – REV UP & DOWN
(REAR LADDER)



CODE: AAM- SCBNUT
SWIVEL CHUTE BRAKE
NUT – (RHEEM)



CODE: AAM-SCBRTREAD
SWIVEL CHUTE BRAKE
TREAD (RHEEM)



CODE: AAMSCBPAD
SWIVEL CHUTE BRAKE
PAD (RHEEM)

CODE:



CODE: AAM- CRHSREF
REFLECTORS RHS (CEMEX)



CODE: RP-DIM024
RUBBER –GUARD



CODE: RP-28891
RUBBER CHUTE STRAP



CODE: RP-DIM008
RUBBER STRAP – WATER
TANK BRACKET (BOTTOM)



CODE: RP-DIM007
RUBBER STRAP – WATER
TANK BRACKET (TOP)



CODE: AAM-BT12984
SANDWICH PLATE
FOR PLASTIC STRIP

MISCELLANEOUS



CODE: AAM-TLCOVER
STERLING TAIL LIGHT
COVER



CODE: AAM-SCL0006
SWIVEL CHUTE LOCK



CODE: HP-ILLEVA0297A1
THERMO FAN 12VOLT
(OLD STYLE)



CODE: HP-HD-ILLEVA0295A1
THERMO FAN 12 VOLT
(NEW STYLE)